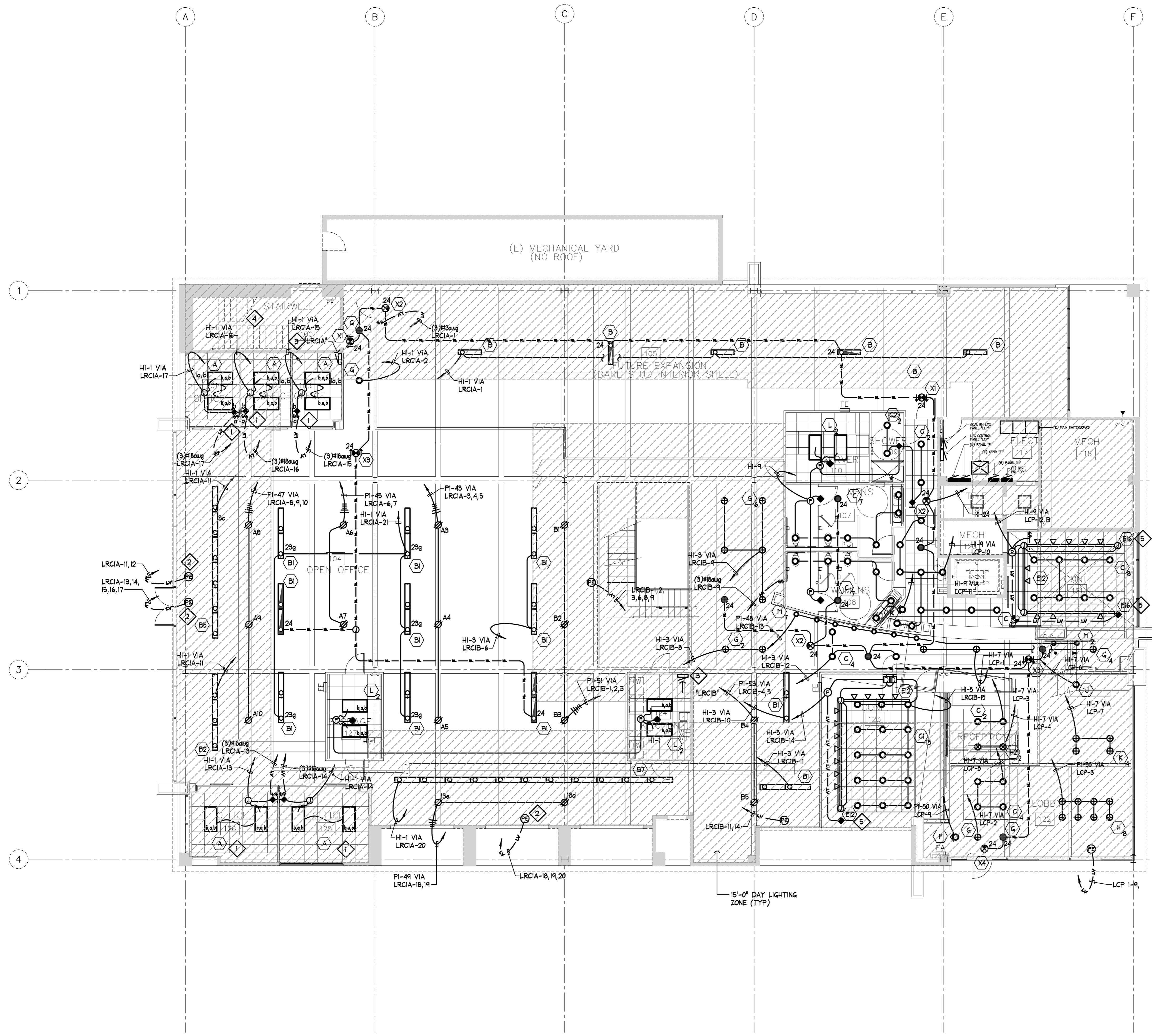
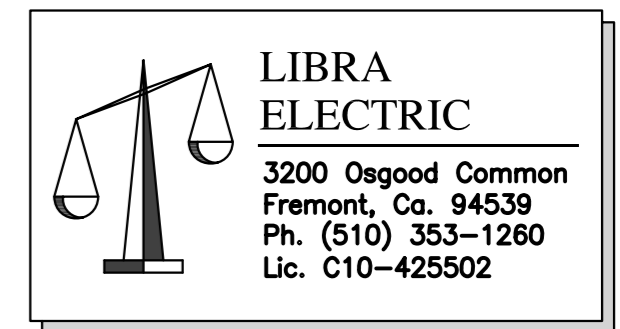


DAHLIN GROUP  
OFFICE BUILDING  
PHASE 2

BUILDING REMODEL



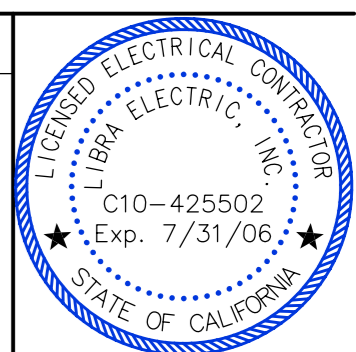
**SHEET NOTES:**

- 1 DAYLIGHT RESPONSE RELAY TURNS OFF CENTER LAMP ON 2x4 FIXTURES, SWITCH LEG '1' (TYPICAL)
- 2 DAYLIGHT RESPONSE PHOTO CELL CONTROLS RELAYS AS INDICATED. COORDINATE INSTALLATION REQUIREMENTS WITH MANUFACTURER PRIOR TO ROUGH IN.
- 3 ALL LIGHTING RELAY CABINETS TO BE LOCATED ABOVE CEILING, TYPICAL, U.O.N.
- 4 RECONNECT EXISTING LIGHT FIXTURES TO EMERGENCY LIGHTING CIRCUIT. (TYPICAL)
- 5 REMOTE CONCEALED TRANSFORMER, TYPICAL AT T-BAR CEILINGS. VERIFY LOCATIONS.

THE WITHIN DESIGN IS THE SOLE AND EXCLUSIVE PROPERTY OF LIBRA ELECTRIC, INC. AND IS NOT TO BE USED, COPIED, OR REPRODUCED, IN WHOLE OR IN PART BY ANY OTHER PERSON. EXHIBITION HEREOF IS SOLELY FOR THE PURPOSE OF EFFECTING A SALE OF THE DELINEATED ELECTRICAL DESIGN OR INSTALLATION TO CUSTOMERS OR PROSPECTIVE CUSTOMERS OF LIBRA ELECTRIC, INC.

**REVISIONS**

DESCRIPTION	DATE	BY
OWNERS REVIEW	11.01.04	LEI
CITY SUBMITTAL	11.09.04	LEI
OWNERS REVIEW	08.03.05	LEI
OWNERS REVIEW	09.01.05	LEI
OWNERS REVIEW	09.14.05	LEI



**FIRST FLOOR LIGHTING PLAN**

**1 FIRST FLOOR LIGHTING PLAN**  
1/8"=1'-0"