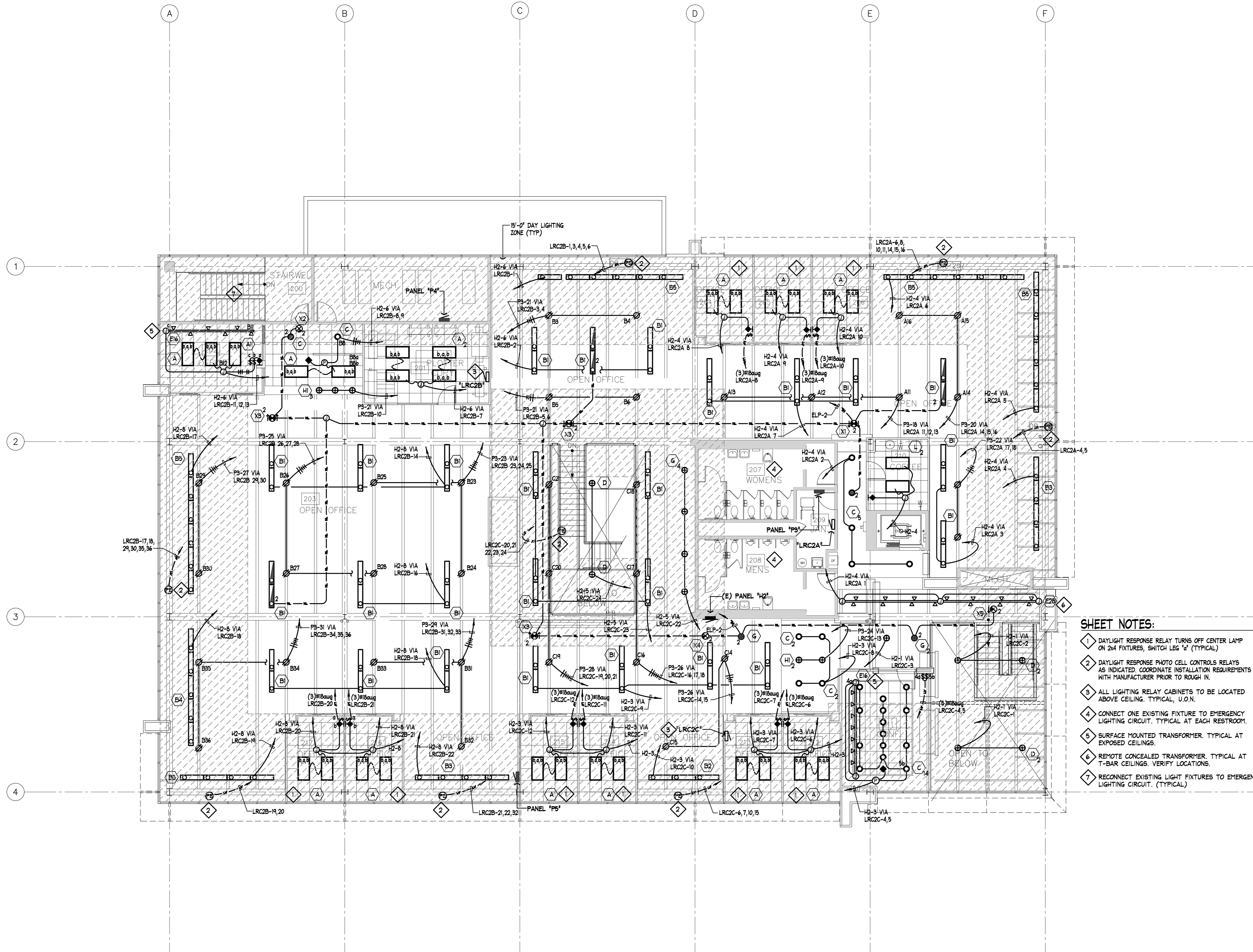


DAHLIN GROUP
OFFICE BUILDING
PHASE 2

BUILDING REMODEL

LIBRA ELECTRIC
3200 Osgood Common
Fremont, Ca. 94539
Ph. (510) 353-1260
Lic. C10-425502

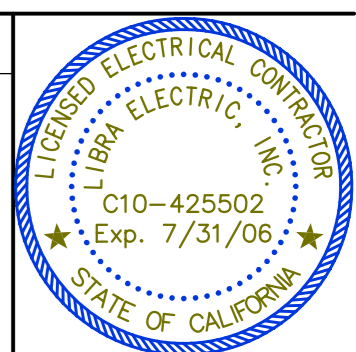


- SHEET NOTES:**
- 1 DAYLIGHT RESPONSE RELAY TURNS OFF CENTER LAMP ON 2x4 FIXTURES, SWITCH LEG 'd' (TYPICAL)
 - 2 DAYLIGHT RESPONSE PHOTO CELL CONTROLS RELAYS AS INDICATED. COORDINATE INSTALLATION REQUIREMENTS WITH MANUFACTURER PRIOR TO ROUGH IN.
 - 3 ALL LIGHTING RELAY CABINETS TO BE LOCATED ABOVE CEILING. TYPICAL, U.O.N.
 - 4 CONNECT ONE EXISTING FIXTURE TO EMERGENCY LIGHTING CIRCUIT. TYPICAL AT EACH RESTROOM.
 - 5 SURFACE MOUNTED TRANSFORMER. TYPICAL AT EXPOSED CEILINGS.
 - 6 REMOTE CONCEALED TRANSFORMER. TYPICAL AT T-BAR CEILINGS. VERIFY LOCATIONS.
 - 7 RECONNECT EXISTING LIGHT FIXTURES TO EMERGENCY LIGHTING CIRCUIT. (TYPICAL)

THE WITHIN DESIGN IS THE SOLE AND EXCLUSIVE PROPERTY OF LIBRA ELECTRIC, INC. AND IS NOT TO BE USED, COPIED, OR REPRODUCED, IN WHOLE OR IN PART BY ANY OTHER PERSON. EXHIBITION HEREOF IS SOLELY FOR THE PURPOSE OF EFFECTING A SALE OF THE DELINEATED ELECTRICAL DESIGN OR INSTALLATION TO CUSTOMERS OR PROSPECTIVE CUSTOMERS OF LIBRA ELECTRIC, INC.

REVISIONS

DESCRIPTION	DATE	BY
OWNERS REVIEW	11.01.04	LEI
CITY SUBMITTAL	11.09.04	LEI
OWNERS REVIEW	08.03.05	LEI
OWNERS REVIEW	09.01.05	LEI
OWNERS REVIEW	09.14.05	LEI



SECOND FLOOR LIGHTING PLAN

1 SECOND FLOOR LIGHTING PLAN
1/8"=1'-0"

JOB NO. 04-117 SHEET
DRAWN BCE
CHECK LEI
DATE 11.01.04 OF

E-1.2