

1. PROVIDE #1 INSTALL JUNCTION BOX FOR CONNECTION TO HEAT STRIP AT PASS THRU. COORDINATE REQUIREMENTS WITH GENERAL CONTRACTOR PRIOR TO ROUGH-IN.
2. PROVIDE #1 INSTALL JUNCTION BOX FOR CONNECTION TO INDUCTION COOKER. COORDINATE EXACT LOCATION AND REQUIREMENTS WITH KITCHEN SUPPLIER PRIOR TO ROUGH-IN.
3. PROVIDE #1 INSTALL JUNCTION BOX FOR CONNECTION TO DISHWASHER. COORDINATE EXACT LOCATION AND ADDITIONAL REQUIREMENTS WITH KITCHEN SUPPLIER PRIOR TO ROUGH-IN.
4. PROVIDE 30A/2P RECEPTACLE BOX ESPRESSO MACHINE. FIELD VERIFY EXACT LOCATION, MOUNTING HEIGHT AND NEMA CONFIGURATION PRIOR TO ROUGH-IN.
5. PROVIDE DEDICATED 20AMP RECEPTACLE FOR ESPRESSO MACHINE. FIELD VERIFY EXACT LOCATION AND MOUNTING HEIGHT PRIOR ROUGH-IN.

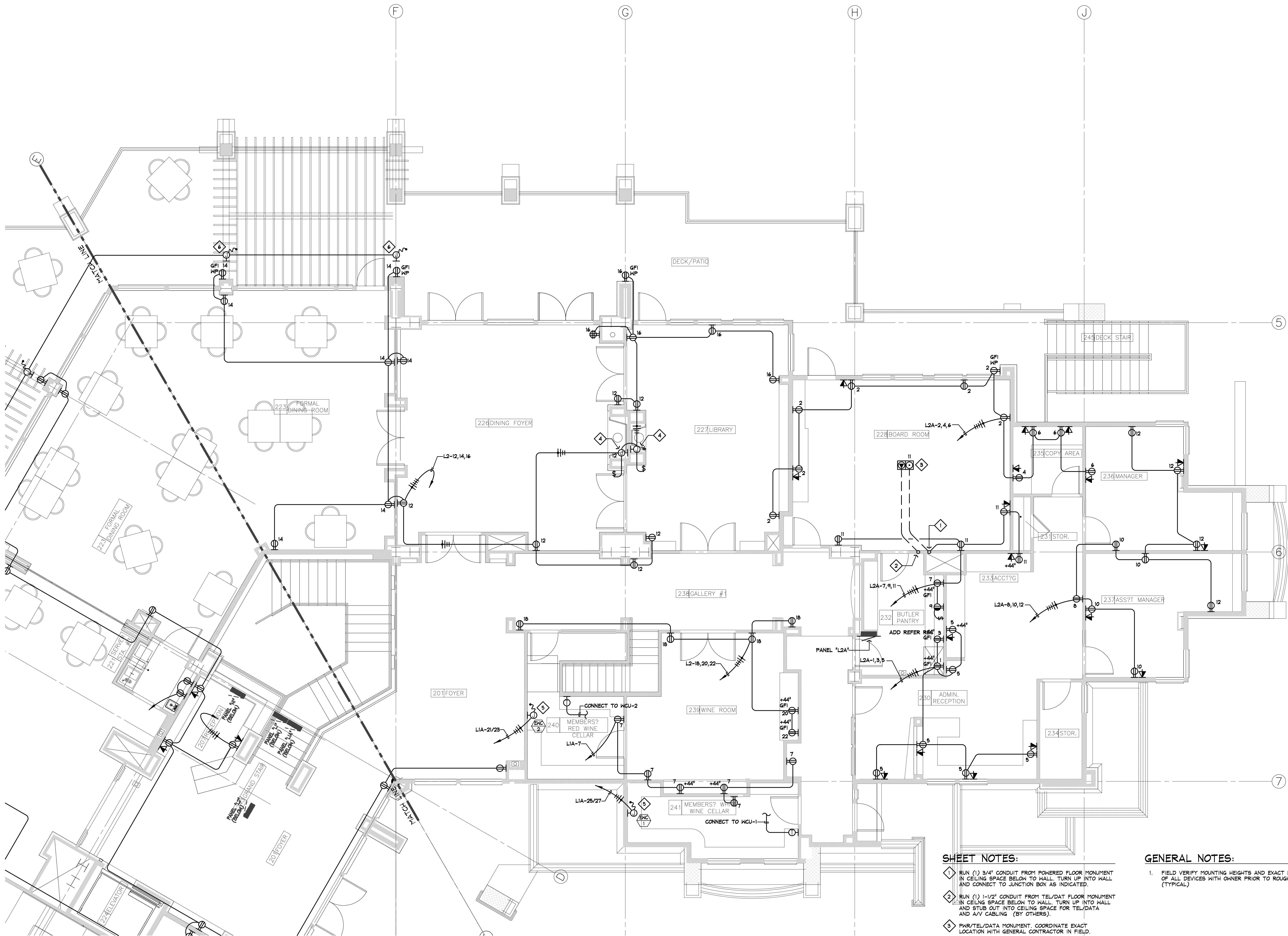
1. FIELD VERIFY MOUNTING HEIGHTS AND EXACT LOCATIONS OF ALL DEVICES WITH OWNER PRIOR TO ROUGH IN, (TYPICAL)

No.		By	Date
-	REVIEW SET	GES	06.08.05
-	Issued for Permit	GES	06.29.05
1	PLAN CHECK	GES	08.02.05
2	PLAN CHECK #2	GES	08.22.05
3	OWNERS REVISIONS	GES	01.31.06
4	OWNERS REVISIONS	GES	03.01.06

date: 05.26.05

Sheet No.:

E-3.22



- 1 RUN (1) 3/4" CONDUIT FROM POWERED FLOOR MONUMENT IN CEILING SPACE BELOW TO WALL. TURN UP INTO WALL AND CONNECT TO JUNCTION BOX AS INDICATED.
- 2 RUN (1) 1-1/2" CONDUIT FROM TEL/DAT FLOOR MONUMENT IN CEILING SPACE BELOW TO WALL. TURN UP INTO WALL AND STUB OUT INTO CEILING SPACE FOR TEL/DATA AND A/V CABLEING (BY OTHERS).

1. FIELD VERIFY MOUNTING HEIGHTS AND EXACT LOCATIONS OF ALL DEVICES WITH OWNER PRIOR TO ROUGH IN, (TYPICAL)

1. FIELD VERIFY MOUNTING HEIGHTS AND EXACT LOCATIONS OF ALL DEVICES WITH OWNER PRIOR TO ROUGH IN, (TYPICAL)

1/4"-1'-0"

GENERAL NOTES:

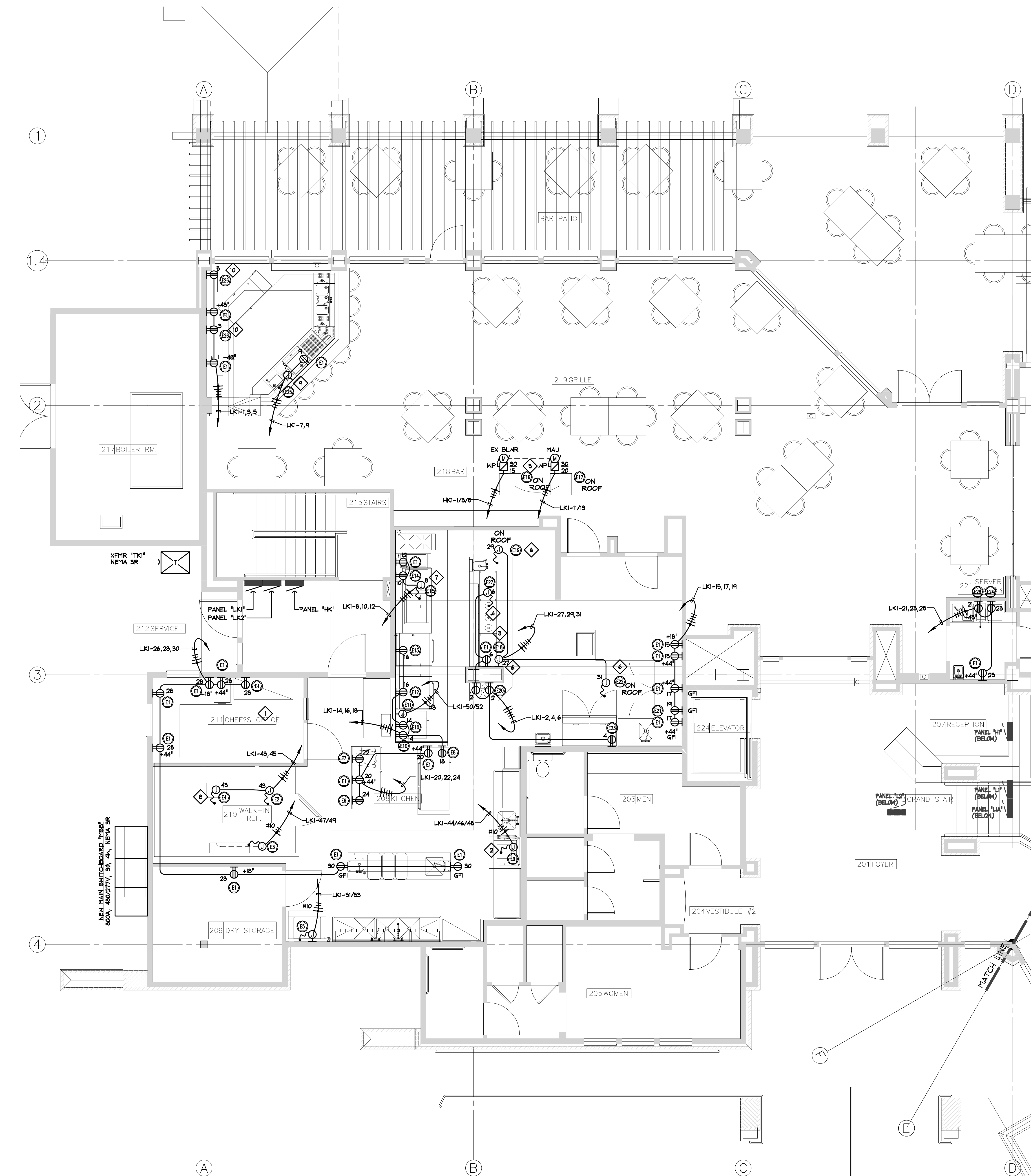
1. REFER TO KITCHEN EQUIPMENT SUPPLIERS DRAWINGS FOR ADDITIONAL INFORMATION AND INSTRUCTION.

- 1 MOUNT KITCHEN PANELS AND TRANSFORMER IN ROOF ACCESS ROOF ABOVE CHEFS OFFICE. FIELD VERIFY NEC WORKING CLEARANCES PRIOR TO ROUGH IN.
- 2 CONNECT TO DISHWASHER. COORDINATE EXACT LOCATION, ELEVATION AND ADDITIONAL REQUIREMENTS WITH KITCHEN EQUIPMENT SUPPLIER PRIOR TO ROUGH IN.
- 3 CONNECT TO CHEFS TABLE EVAPORATOR FAN WITH SEAL TIGHT FLEX. MOUNT JUNCTION BOX AT +12". COORDINATE WITH KITCHEN EQUIPMENT SUPPLIER PRIOR TO ROUGH IN.
- 4 PROVIDE AND INSTALL JUNCTION BOX IN CEILING. CONNECT TO 120V POWERED HEAT EXCHANGER. FIELD VERIFY EXACT LOCATION WITH KITCHEN EQUIPMENT SUPPLIER PRIOR TO ROUGH IN.
- 5 INTERLOCK EXHAUST BLOWER AND MAKE UP AIR UNIT. COORDINATE REQUIREMENTS WITH MECHANICAL CONTRACTOR AND KITCHEN SUPPLIER PRIOR TO ROUGH IN.
- 6 INTERLOCK CHEFS TABLE EVAPORATOR FAN WITH REMOTE CONDENSER (ON ROOF). COORDINATE INSTALLATION WITH MECHANICAL CONTRACTOR AND KITCHEN SUPPLIER PRIOR TO ROUGH IN.
- 7 PROVIDE AND INSTALL JUNCTION BOX ABOVE HOOD. CONNECT TO HOOD EXHAUST WITH SEAL TIGHT FLEX. COORDINATE ADDITIONAL REQUIREMENTS WITH MECHANICAL CONTRACTOR AND KITCHEN SUPPLIER PRIOR TO ROUGH IN.
- 8 PROVIDE AND INSTALL JUNCTION BOX ABOVE WALK IN COOLER. CONNECT TO UNITS WITH SEAL TIGHT FLEX. FIELD VERIFY COORDINATE WITH MECHANICAL CONTRACTOR AND KITCHEN SUPPLIER PRIOR TO ROUGH IN.
- 9 PROVIDE AND INSTALL JUNCTION BOX IN BASE OF BAR, RUN SEAL TIGHT FLEX TO UNIT. DUPLEX RECEPTABLES AS REQ'D. COORDINATE EXACT LOCATION WITH PLUMBING HEIGHTS WITH KITCHEN SUPPLIER PRIOR TO ROUGH IN.
- 10 PROVIDE AND INSTALL 15-1BR DUPLEX RECEPTACLE IN WALL. MOUNT HORIZONTALLY AT +18" A.F.F. VERIFY EXACT LOCATION WITH KITCHEN SUPPLIER PRIOR TO ROUGH IN.

No.		By	Date
-	REVIEW SET	GES	06.08.05
-	Issued for Permit	GES	06.29.05
1	PLAN CHECK	GES	08.02.05
2	PLAN CHECK #2	GES	08.22.05
3	OWNERS REVISIONS	GES	01.31.06
4	OWNERS REVISIONS	GES	03.01.06

Sheet No.:

E-3.23



1	KITCHEN POWER PLAN
-	1/4"=1'-0"