

# SIMPSON STRONG TIE (PHASE ONE)

5956 & 5964 W. LAS POSITAS BLVD  
PLEASANTON, CA.

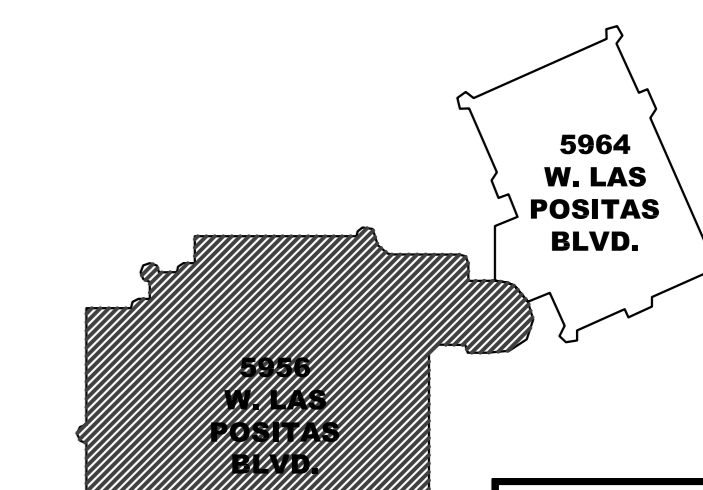
## ID/Architecture

7020 Koll Center Parkway, Suite 105  
Pleasanton, California 94566  
Tel. 925.484.5245  
Fax 925.484.5206



CANNINO ELECTRIC INC. DESIGN / BUILD  
1063-B SERPENTINE LN.,  
PLEASANTON, CA 94566  
(925) 485-9999 Fax (925) 485-5955  
Lic. #970064

### KEY PLAN

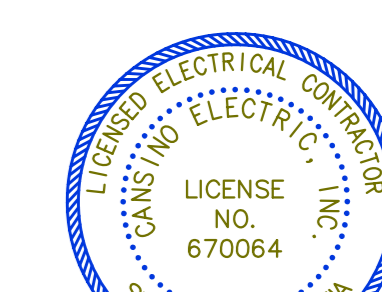


RECORD DOCUMENT  
Date: 02.03.06

### PHASE ONE

THE WITHIN DESIGN IS THE SOLE AND EXCLUSIVE PROPERTY OF CANNINO ELECTRIC, INC. AND IS NOT TO BE USED, COPIED, OR REPRODUCED, IN WHOLE OR IN PART, BY ANY OTHER PERSON, WITHOUT THE WRITTEN CONSENT OF CANNINO ELECTRIC, INC. A SALE OF THE DELINEATED ELECTRICAL DESIGN OR INSTALLATION TO CONTRACTOR OR PROPRIETOR. (CUSTOMERS OF CANNINO ELECTRIC, INC.)

Revision	Date	Description	By
△	11.07.05	ISSUED FOR PERMIT	CEI
△	02.03.06	RECORD DOCUMENT	CEI
△			
△			
△			
△			
△			
△			
△			
△			
△			
△			
△			
△			
△			
△			
△			
△			



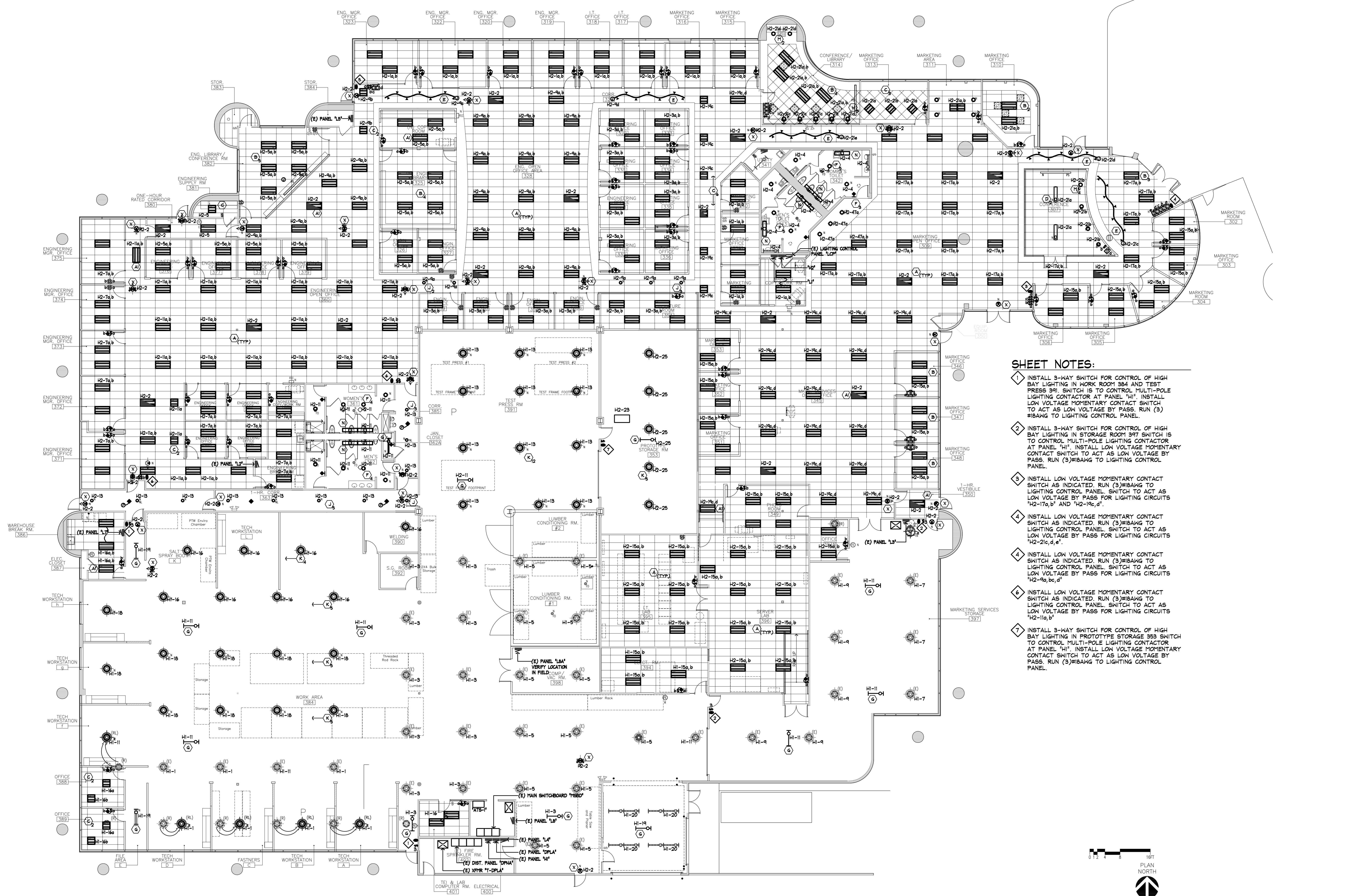
Project No.: 05-094 Scale: 3/32"=1'-0"  
Date: 11.07.05 Drawn By: BCE Checked By: CEI  
Sheet Title: LIGHTING PLAN

### LIGHTING PLAN

SHEET NUMBER

### SHEET NOTES:

- ◆ INSTALL 3-WAY SWITCH FOR CONTROL OF HIGH BAY LIGHTING IN WORK ROOM 384 AND TEST PRESS 391. SWITCH IS TO CONTROL MULTI-POLE LIGHTING CONTACTOR AT PANEL "H1". INSTALL LOW VOLTAGE MOMENTARY CONTACT SWITCH TO ACT AS LOW VOLTAGE BY PASS. RUN (B) #18AWG TO LIGHTING CONTROL PANEL.
- ◆ INSTALL 3-WAY SWITCH FOR CONTROL OF HIGH BAY LIGHTING IN STORAGE ROOM 397 SWITCH IS TO CONTROL MULTI-POLE LIGHTING CONTACTOR AT PANEL "H1". INSTALL LOW VOLTAGE MOMENTARY CONTACT SWITCH TO ACT AS LOW VOLTAGE BY PASS. RUN (3) #18AWG TO LIGHTING CONTROL PANEL.
- ◆ INSTALL LOW VOLTAGE MOMENTARY CONTACT SWITCH AS INDICATED. RUN (3) #18AWG TO LIGHTING CONTROL PANEL. SWITCH TO ACT AS LOW VOLTAGE BY PASS FOR LIGHTING CIRCUITS #2-17a,b AND #2-15a,d.
- ◆ INSTALL LOW VOLTAGE MOMENTARY CONTACT SWITCH AS INDICATED. RUN (3) #18AWG TO LIGHTING CONTROL PANEL. SWITCH TO ACT AS LOW VOLTAGE BY PASS FOR LIGHTING CIRCUITS #2-17a,b AND #2-15a,d.
- ◆ INSTALL LOW VOLTAGE MOMENTARY CONTACT SWITCH AS INDICATED. RUN (3) #18AWG TO LIGHTING CONTROL PANEL. SWITCH TO ACT AS LOW VOLTAGE BY PASS FOR LIGHTING CIRCUITS #2-17a,b AND #2-15a,d.
- ◆ INSTALL LOW VOLTAGE MOMENTARY CONTACT SWITCH AS INDICATED. RUN (3) #18AWG TO LIGHTING CONTROL PANEL. SWITCH TO ACT AS LOW VOLTAGE BY PASS FOR LIGHTING CIRCUITS #2-17a,b AND #2-15a,d.
- ◆ INSTALL LOW VOLTAGE MOMENTARY CONTACT SWITCH AS INDICATED. RUN (3) #18AWG TO LIGHTING CONTROL PANEL. SWITCH TO ACT AS LOW VOLTAGE BY PASS FOR LIGHTING CIRCUITS #2-17a,b AND #2-15a,d.
- ◆ INSTALL 3-WAY SWITCH FOR CONTROL OF HIGH BAY LIGHTING IN PROTOTYPE STORAGE 395 SWITCH TO CONTROL MULTI-POLE LIGHTING CONTACTOR AT PANEL "H1". INSTALL LOW VOLTAGE MOMENTARY CONTACT SWITCH TO ACT AS LOW VOLTAGE BY PASS. RUN (3) #18AWG TO LIGHTING CONTROL PANEL.



**1 LIGHTING PLAN**  
3/32"=1'-0"

DATE PLOTTED: Friday, Nov 03, 2006 11:08:48 AM